

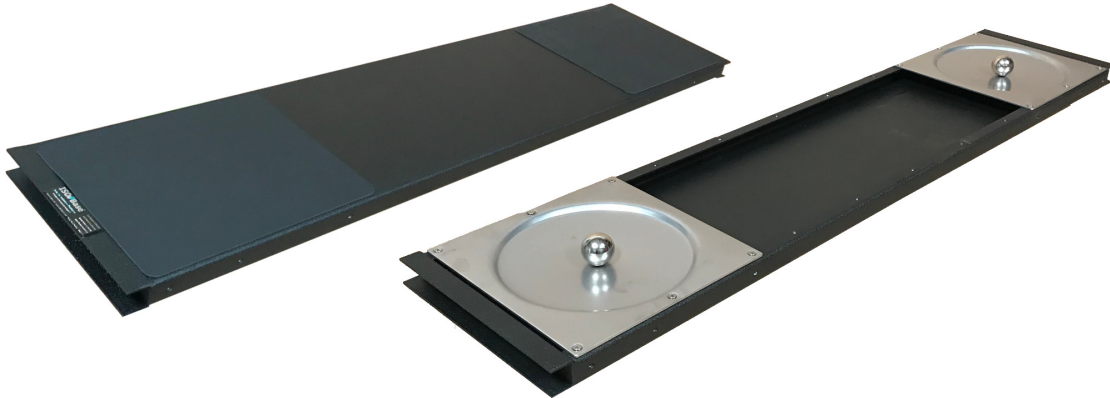
ISO·BASE™

SEISMIC ISOLATION PLATFORM

ISO-Base™ - Standard Stainless Steel Isolators

PRICE LIST • 10.75" Width Planks • 02/01/2023

Pricing Listed Below is by individual plank assembly - (One side of a single unit platform)
Each plank includes: A Top & Bottom Frame Section, (2) Ball-N-Cone™ Bearings, (4) Connectors, & all hardware necessary for assembly.



Part Number	Description	Price
IBP 1030B	(1) Plank Assembly - 10.75" wide x <u>30</u> " long	\$2,000
IBP 1033B	(1) Plank Assembly - 10.75" wide x <u>33</u> " long	\$2,060
IBP 1036B	(1) Plank Assembly - 10.75" wide x <u>36</u> " long	\$2,120
IBP 1039B	(1) Plank Assembly - 10.75" wide x <u>39</u> " long	\$2,180
IBP 1042B	(1) Plank Assembly - 10.75" wide x <u>42</u> " long	\$2,240
IBP 1045B	(1) Plank Assembly - 10.75" wide x <u>45</u> " long	\$2,300
IBP 1048B	(1) Plank Assembly - 10.75" wide x <u>48</u> " long	\$2,360
IBP 1051B	(1) Plank Assembly - 10.75" wide x <u>51</u> " long	\$2,420
IBP 1054B	(1) Plank Assembly - 10.75" wide x <u>54</u> " long	\$2,480
IBP 1060B	(1) Plank Assembly - 10.75" wide x <u>60</u> " long	\$2,600
IBP 1066B	(1) Plank Assembly - 10.75" wide x <u>66</u> " long	\$2,720
IBP 1072B	(1) Plank Assembly - 10.75" wide x <u>72</u> " long	\$2,840

Contact us today!

Let us configure the right solution for your data center's requirements.

www.instor.com • contact@instor.com

ISO·BASE™

SEISMIC ISOLATION PLATFORM

ISO-Base™ - Stainless Steel Isolators with QuakeCoat™

PRICE LIST • 10.75" Width Planks • 02/01/2023

Pricing Listed Below is by individual plank assembly - (One side of a single unit platform)

Each plank includes: A Top & Bottom Frame Section, (2) Ball-N-Cone™ Bearings, (4) Connectors, & all hardware necessary for assembly.



Part Number	Description	Price w/ QC
IBP 1030BQ	(1) Plank Assembly - 10.75" wide x <u>30</u> " long w/ QuakeCoat™	\$2,300
IBP 1033BQ	(1) Plank Assembly - 10.75" wide x <u>33</u> " long w/ QuakeCoat™	\$2,360
IBP 1036BQ	(1) Plank Assembly - 10.75" wide x <u>36</u> " long w/ QuakeCoat™	\$2,420
IBP 1039BQ	(1) Plank Assembly - 10.75" wide x <u>39</u> " long w/ QuakeCoat™	\$2,480
IBP 1042BQ	(1) Plank Assembly - 10.75" wide x <u>42</u> " long w/ QuakeCoat™	\$2,540
IBP 1045BQ	(1) Plank Assembly - 10.75" wide x <u>45</u> " long w/ QuakeCoat™	\$2,600
IBP 1048BQ	(1) Plank Assembly - 10.75" wide x <u>48</u> " long w/ QuakeCoat™	\$2,660
IBP 1051BQ	(1) Plank Assembly - 10.75" wide x <u>51</u> " long w/ QuakeCoat™	\$2,720
IBP 1054BQ	(1) Plank Assembly - 10.75" wide x <u>54</u> " long w/ QuakeCoat™	\$2,780
IBP 1060BQ	(1) Plank Assembly - 10.75" wide x <u>60</u> " long w/ QuakeCoat™	\$2,900
IBP 1066BQ	(1) Plank Assembly - 10.75" wide x <u>66</u> " long w/ QuakeCoat™	\$3,020
IBP 1072BQ	(1) Plank Assembly - 10.75" wide x <u>72</u> " long w/ QuakeCoat™	\$3,140

Contact us today!

Let us configure the right solution for your data center's requirements.

www.instor.com • contact@instor.com

ISO-BASE™

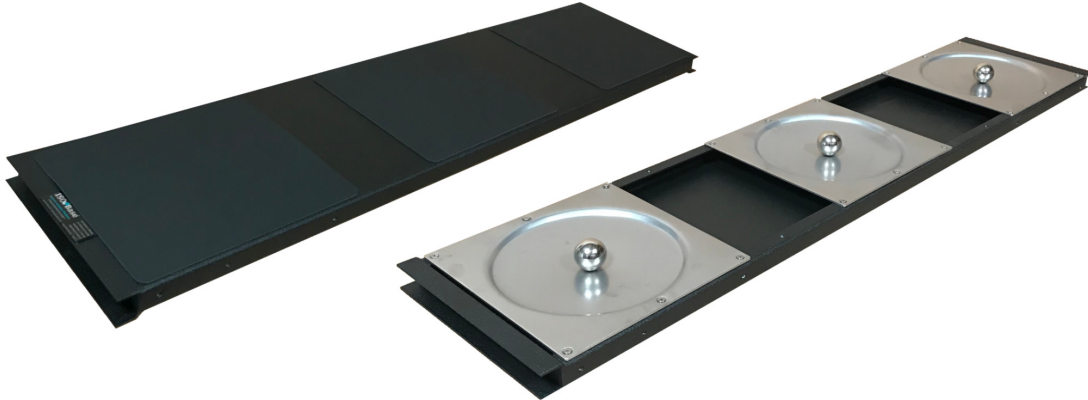
SEISMIC ISOLATION PLATFORM

ISO-Base™ - Standard Stainless Steel Isolators

PRICE LIST • 10.75" Width Heavy-Duty Planks • 02/01/2023

Pricing Listed Below is by individual plank assembly - (One side of a single unit platform)

Each plank includes: A Top & Bottom Frame Section, (2) Ball-N-Cone™ Bearings, (4) Connectors, & all hardware necessary for assembly.



Part Number	Description	Price
IBPHD 1042B	(1) Heavy-Duty Plank Assembly - 10.75" wide x <u>42</u> " long	\$2,900
IBPHD 1045B	(1) Heavy-Duty Plank Assembly - 10.75" wide x <u>45</u> " long	\$2,960
IBPHD 1048B	(1) Heavy-Duty Plank Assembly - 10.75" wide x <u>48</u> " long	\$3,020
IBPHD 1051B	(1) Heavy-Duty Plank Assembly - 10.75" wide x <u>51</u> " long	\$3,080
IBPHD 1054B	(1) Heavy-Duty Plank Assembly - 10.75" wide x <u>54</u> " long	\$3,140
IBPHD 1060B	(1) Heavy-Duty Plank Assembly - 10.75" wide x <u>60</u> " long	\$3,260
IBPHD 1066B	(1) Heavy-Duty Plank Assembly - 10.75" wide x <u>66</u> " long	\$3,380
IBPHD 1072B	(1) Heavy-Duty Plank Assembly - 10.75" wide x <u>72</u> " long	\$3,500

Contact us today!

Let us configure the right solution for your data center's requirements.

www.instor.com • contact@instor.com

ISO●BASE™

SEISMIC ISOLATION PLATFORM

ISO-Base™ - Stainless Steel Isolators with QuakeCoat™

PRICE LIST • 10.75" Width Heavy-Duty Planks • 02/01/2023

Pricing Listed Below is by individual plank assembly - (One side of a single unit platform)

Each plank includes: A Top & Bottom Frame Section, (2) Ball-N-Cone™ Bearings, (4) Connectors, & all hardware necessary for assembly.



Part Number	Description	Price w/ QC
IBPHD 1042BQ	(1) Heavy-Duty Plank Assembly - 10.75" wide x <u>42</u> " long w/ QuakeCoat™	\$3,350
IBPHD 1045BQ	(1) Heavy-Duty Plank Assembly - 10.75" wide x <u>45</u> " long w/ QuakeCoat™	\$3,410
IBPHD 1048BQ	(1) Heavy-Duty Plank Assembly - 10.75" wide x <u>48</u> " long w/ QuakeCoat™	\$3,470
IBPHD 1051BQ	(1) Heavy-Duty Plank Assembly - 10.75" wide x <u>51</u> " long w/ QuakeCoat™	\$3,530
IBPHD 1054BQ	(1) Heavy-Duty Plank Assembly - 10.75" wide x <u>54</u> " long w/ QuakeCoat™	\$3,590
IBPHD 1060BQ	(1) Heavy-Duty Plank Assembly - 10.75" wide x <u>60</u> " long w/ QuakeCoat™	\$3,710
IBPHD 1066BQ	(1) Heavy-Duty Plank Assembly - 10.75" wide x <u>66</u> " long w/ QuakeCoat™	\$3,830
IBPHD 1072BQ	(1) Heavy-Duty Plank Assembly - 10.75" wide x <u>72</u> " long w/ QuakeCoat™	\$3,950

Contact us today!

Let us configure the right solution for your data center's requirements.

www.instor.com • contact@instor.com

ISO·BASE™

SEISMIC ISOLATION PLATFORM

ISO-Base™ - Standard Stainless Steel Isolators

PRICE LIST • 12.75" Width Planks • 02/01/2023

Pricing Listed Below is by individual plank assembly - (One side of a single unit platform)
 Each plank includes: A Top & Bottom Frame Section, (2) Ball-N-Cone™ Bearings, (4) Connectors, & all hardware necessary for assembly.



Part Number	Description	Price
IBP 1230B	(1) Plank Assembly - 12.75" wide x <u>30</u> " long	\$2,165
IBP 1233B	(1) Plank Assembly - 12.75" wide x <u>33</u> " long	\$2,225
IBP 1236B	(1) Plank Assembly - 12.75" wide x <u>36</u> " long	\$2,285
IBP 1239B	(1) Plank Assembly - 12.75" wide x <u>39</u> " long	\$2,345
IBP 1242B	(1) Plank Assembly - 12.75" wide x <u>42</u> " long	\$2,405
IBP 1245B	(1) Plank Assembly - 12.75" wide x <u>45</u> " long	\$2,465
IBP 1248B	(1) Plank Assembly - 12.75" wide x <u>48</u> " long	\$2,525
IBP 1251B	(1) Plank Assembly - 12.75" wide x <u>51</u> " long	\$2,585
IBP 1254B	(1) Plank Assembly - 12.75" wide x <u>54</u> " long	\$2,645
IBP 1260B	(1) Plank Assembly - 12.75" wide x <u>60</u> " long	\$2,765
IBP 1266B	(1) Plank Assembly - 12.75" wide x <u>66</u> " long	\$2,885
IBP 1272B	(1) Plank Assembly - 12.75" wide x <u>72</u> " long	\$3,005

Contact us today!

Let us configure the right solution for your data center's requirements.

www.instor.com • contact@instor.com

ISOBASE™

SEISMIC ISOLATION PLATFORM

ISO-Base™ - Standard Stainless Steel Isolators

PRICE LIST • 12.75" Width Planks • 02/01/2023

Pricing Listed Below is by individual plank assembly - (One side of a single unit platform)

Each plank includes: A Top & Bottom Frame Section, (2) Ball-N-Cone™ Bearings, (4) Connectors, & all hardware necessary for assembly.



Part Number	Description	Price w/ QC
IBP 1230BQ	(1) Plank Assembly - 12.75" wide x <u>30</u> " long w/ QuakeCoat™	\$2,465
IBP 1233BQ	(1) Plank Assembly - 12.75" wide x <u>33</u> " long w/ QuakeCoat™	\$2,525
IBP 1236BQ	(1) Plank Assembly - 12.75" wide x <u>36</u> " long w/ QuakeCoat™	\$2,585
IBP 1239BQ	(1) Plank Assembly - 12.75" wide x <u>39</u> " long w/ QuakeCoat™	\$2,645
IBP 1242BQ	(1) Plank Assembly - 12.75" wide x <u>42</u> " long w/ QuakeCoat™	\$2,705
IBP 1245BQ	(1) Plank Assembly - 12.75" wide x <u>45</u> " long w/ QuakeCoat™	\$2,765
IBP 1248BQ	(1) Plank Assembly - 12.75" wide x <u>48</u> " long w/ QuakeCoat™	\$2,825
IBP 1251BQ	(1) Plank Assembly - 12.75" wide x <u>51</u> " long w/ QuakeCoat™	\$2,885
IBP 1254BQ	(1) Plank Assembly - 12.75" wide x <u>54</u> " long w/ QuakeCoat™	\$2,945
IBP 1260BQ	(1) Plank Assembly - 12.75" wide x <u>60</u> " long w/ QuakeCoat™	\$3,065
IBP 1266BQ	(1) Plank Assembly - 12.75" wide x <u>66</u> " long w/ QuakeCoat™	\$3,185
IBP 1272BQ	(1) Plank Assembly - 12.75" wide x <u>72</u> " long w/ QuakeCoat™	\$3,305

Contact us today!

Let us configure the right solution for your data center's requirements.

www.instor.com • contact@instor.com

ISO-BASE™

SEISMIC ISOLATION PLATFORM

ISO-Base™ - Standard Stainless Steel Isolators

PRICE LIST • 12.75" Width Heavy-Duty Planks • 02/01/2023

Pricing Listed Below is by individual plank assembly - (One side of a single unit platform)

Each plank includes: A Top & Bottom Frame Section, (2) Ball-N-Cone™ Bearings, (4) Connectors, & all hardware necessary for assembly.



Part Number	Description	Price
IBPHD 1242B	(1) Heavy-Duty Plank Assembly - 12.75" wide x <u>42</u> " long	\$3,065
IBPHD 1245B	(1) Heavy-Duty Plank Assembly - 12.75" wide x <u>45</u> " long	\$3,125
IBPHD 1248B	(1) Heavy-Duty Plank Assembly - 12.75" wide x <u>48</u> " long	\$3,185
IBPHD 1251B	(1) Heavy-Duty Plank Assembly - 12.75" wide x <u>51</u> " long	\$3,245
IBPHD 1254B	(1) Heavy-Duty Plank Assembly - 12.75" wide x <u>54</u> " long	\$3,305
IBPHD 1260B	(1) Heavy-Duty Plank Assembly - 12.75" wide x <u>60</u> " long	\$3,425
IBPHD 1266B	(1) Heavy-Duty Plank Assembly - 12.75" wide x <u>66</u> " long	\$3,545
IBPHD 1272B	(1) Heavy-Duty Plank Assembly - 12.75" wide x <u>72</u> " long	\$3,665

Contact us today!

Let us configure the right solution for your data center's requirements.

www.instor.com • contact@instor.com

ISO●BASE™

SEISMIC ISOLATION PLATFORM

ISO-Base™ - Stainless Steel Isolators with QuakeCoat™

PRICE LIST • 12.75" Width Heavy-Duty Planks • 02/01/2023

Pricing Listed Below is by individual plank assembly - (One side of a single unit platform)

Each plank includes: A Top & Bottom Frame Section, (2) Ball-N-Cone™ Bearings, (4) Connectors, & all hardware necessary for assembly.



Part Number	Description	Price w/ QC
IBPHD 1242BQ	(1) Heavy-Duty Plank Assembly - 12.75" wide x <u>42</u> " long w/ QuakeCoat™	\$3,515
IBPHD 1245BQ	(1) Heavy-Duty Plank Assembly - 12.75" wide x <u>45</u> " long w/ QuakeCoat™	\$3,575
IBPHD 1248BQ	(1) Heavy-Duty Plank Assembly - 12.75" wide x <u>48</u> " long w/ QuakeCoat™	\$3,635
IBPHD 1251BQ	(1) Heavy-Duty Plank Assembly - 12.75" wide x <u>51</u> " long w/ QuakeCoat™	\$3,695
IBPHD 1254BQ	(1) Heavy-Duty Plank Assembly - 12.75" wide x <u>54</u> " long w/ QuakeCoat™	\$3,755
IBPHD 1260BQ	(1) Heavy-Duty Plank Assembly - 12.75" wide x <u>60</u> " long w/ QuakeCoat™	\$3,875
IBPHD 1266BQ	(1) Heavy-Duty Plank Assembly - 12.75" wide x <u>66</u> " long w/ QuakeCoat™	\$3,995
IBPHD 1272BQ	(1) Heavy-Duty Plank Assembly - 12.75" wide x <u>72</u> " long w/ QuakeCoat™	\$4,115

Contact us today!

Let us configure the right solution for your data center's requirements.

www.instor.com • contact@instor.com

ISOBASE™

SEISMIC ISOLATION PLATFORM

ISO-Base™ - Stainless Steel Isolators with QuakeCoat™

PRICE LIST • 14.75" Width Planks • 02/01/2023

Pricing Listed Below is by individual plank assembly - (One side of a single unit platform)

Each plank includes: A Top & Bottom Frame Section, (2) Ball-N-Cone™ Bearings, (4) Connectors, & all hardware necessary for assembly.



Part Number	Description/Kit Contents	Price
IBP 1430B	(1) Plank Assembly - 14.75" wide x <u>30</u> " long	\$2,280
IBP 1433B	(1) Plank Assembly - 14.75" wide x <u>33</u> " long	\$2,340
IBP 1436B	(1) Plank Assembly - 14.75" wide x <u>36</u> " long	\$2,400
IBP 1439B	(1) Plank Assembly - 14.75" wide x <u>39</u> " long	\$2,460
IBP 1442B	(1) Plank Assembly - 14.75" wide x <u>42</u> " long	\$2,520
IBP 1445B	(1) Plank Assembly - 14.75" wide x <u>45</u> " long	\$2,580
IBP 1448B	(1) Plank Assembly - 14.75" wide x <u>48</u> " long	\$2,640
IBP 1451B	(1) Plank Assembly - 14.75" wide x <u>51</u> " long	\$2,700
IBP 1454B	(1) Plank Assembly - 14.75" wide x <u>54</u> " long	\$2,760
IBP 1460B	(1) Plank Assembly - 14.75" wide x <u>60</u> " long	\$2,880
IBP 1466B	(1) Plank Assembly - 14.75" wide x <u>66</u> " long	\$3,000
IBP 1472B	(1) Plank Assembly - 14.75" wide x <u>72</u> " long	\$3,120

Contact us today!

Let us configure the right solution for your data center's requirements.

www.instor.com • contact@instor.com

ISOBASE™

SEISMIC ISOLATION PLATFORM

ISO-Base™ - Stainless Steel Isolators with QuakeCoat™

PRICE LIST • 14.75" Width Planks • 02/01/2023

Pricing Listed Below is by individual plank assembly - (One side of a single unit platform)

Each plank includes: A Top & Bottom Frame Section, (2) Ball-N-Cone™ Bearings, (4) Connectors, & all hardware necessary for assembly.



Part Number	Description	Price w/ QC
IBP 1430BQ	(1) Plank Assembly - 14.75" wide x <u>30</u> " long w/ QuakeCoat™	\$2,580
IBP 1433BQ	(1) Plank Assembly - 14.75" wide x <u>33</u> " long w/ QuakeCoat™	\$2,640
IBP 1436BQ	(1) Plank Assembly - 14.75" wide x <u>36</u> " long w/ QuakeCoat™	\$2,700
IBP 1439BQ	(1) Plank Assembly - 14.75" wide x <u>39</u> " long w/ QuakeCoat™	\$2,760
IBP 1442BQ	(1) Plank Assembly - 14.75" wide x <u>42</u> " long w/ QuakeCoat™	\$2,820
IBP 1445BQ	(1) Plank Assembly - 14.75" wide x <u>45</u> " long w/ QuakeCoat™	\$2,880
IBP 1448BQ	(1) Plank Assembly - 14.75" wide x <u>48</u> " long w/ QuakeCoat™	\$2,940
IBP 1451BQ	(1) Plank Assembly - 14.75" wide x <u>51</u> " long w/ QuakeCoat™	\$3,000
IBP 1454BQ	(1) Plank Assembly - 14.75" wide x <u>54</u> " long w/ QuakeCoat™	\$3,060
IBP 1460BQ	(1) Plank Assembly - 14.75" wide x <u>60</u> " long w/ QuakeCoat™	\$3,180
IBP 1466BQ	(1) Plank Assembly - 14.75" wide x <u>66</u> " long w/ QuakeCoat™	\$3,300
IBP 1472BQ	(1) Plank Assembly - 14.75" wide x <u>72</u> " long w/ QuakeCoat™	\$3,420

Contact us today!

Let us configure the right solution for your data center's requirements.

www.instor.com • contact@instor.com